

301-309 SE Douglas Street

Lee's Summit, Missouri



Office Space for Lease

As exclusive agents, we are pleased to offer the following space for lease:

- ◆ 1,500 to 4,510 sf, 11 offices, 2 conference rooms, break room and reception
- ◆ 2nd floor office space at the corner of 3rd Street and Douglas in the heart of historic Downtown Lee's Summit
- ◆ Downtown Lee's Summit provides a wide variety of unique shops, restaurants and everyday businesses
- ◆ Directly above the new Llewellyn's Restaurant and Bar
- ◆ Private entrance and exterior balcony
- ◆ Lease Rate: \$14.95/sf net of janitorial, gas and electric

Michael L. Vanbuskirk 816.512.1010 mvanbuskirk@ngzimmer.com

Justin Beal 816.268.4241 jbeal@ngzimmer.com

**Newmark Grubb
Zimmer**

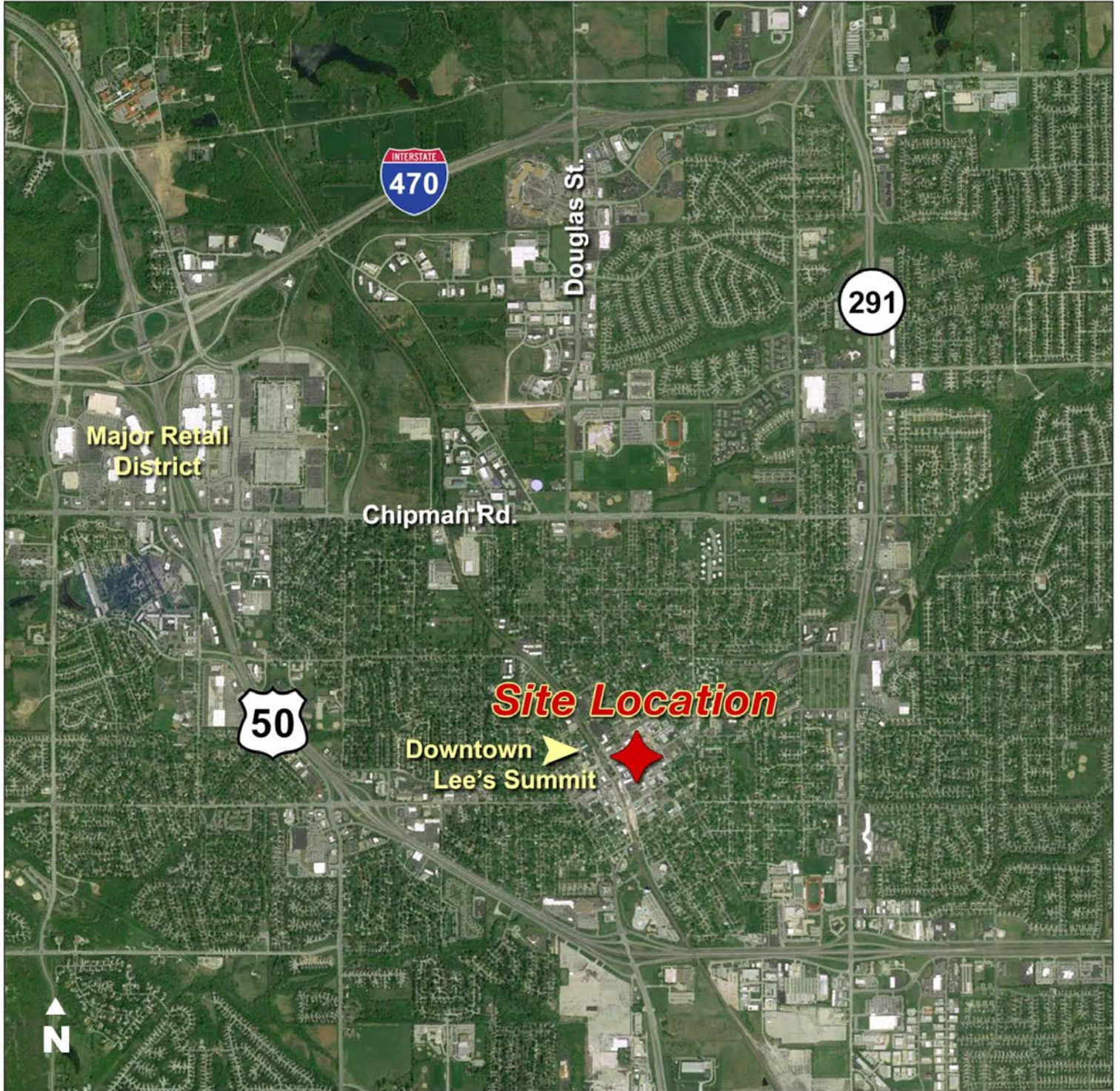
1220 Washington Street, Kansas City, Missouri 64105

Independently owned and operated

Procuring broker shall only be entitled to a commission calculated in accordance with the rates approved by our principal only if such procuring broker executes a brokerage agreement acceptable to us and our principal and the conditions as set forth in the brokerage agreement are fully and unconditionally satisfied. Although all information furnished regarding property for sale, rental, or financing is from sources deemed reliable, such information has not been verified and no express representation is made nor is any to be implied as to the accuracy thereof and it is submitted subject to errors, omissions, change of price, rental or other conditions, prior sale, lease or financing, or withdrawal without notice and to any special conditions imposed by our principal.

301-309 SE Douglas Street

Lee's Summit, Missouri



Michael L. Vanbuskirk 816.512.1010 mvanbuskirk@ngzimmer.com

Justin Beal 816.268.4241 jbeal@ngzimmer.com

Newmark Grubb
Zimmer

301-309 SE Douglas Street

Lee's Summit, Missouri



Michael L. Vanbuskirk 816.512.1010 mvanbuskirk@ngzimmer.com

Justin Beal 816.268.4241 jbeal@ngzimmer.com

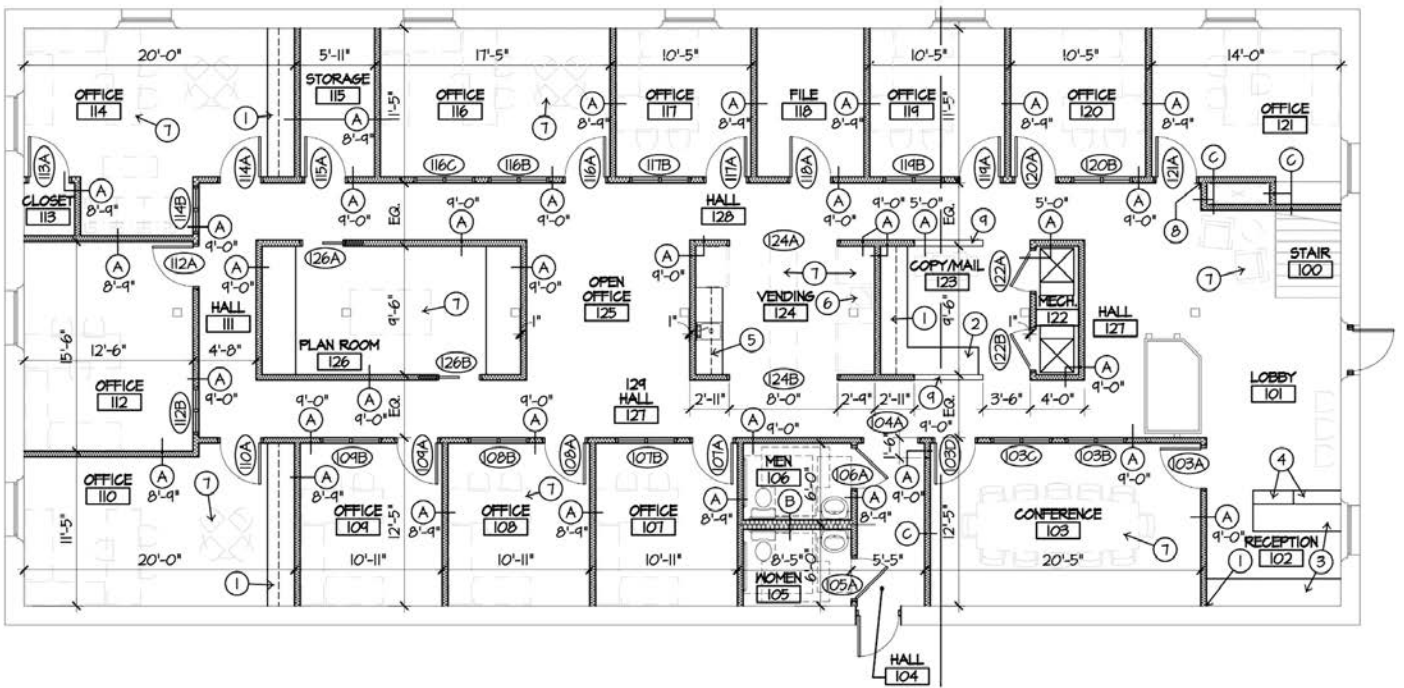
Newmark Grubb
Zimmer

301-309 SE Douglas Street

Lee's Summit, Missouri



Second Floor Office Plan



Michael L. Vanbuskirk 816.512.1010 mvanbuskirk@ngzimmer.com

Justin Beal 816.268.4241 jbeal@ngzimmer.com

301-309 SE Douglas Street

Lee's Summit, Missouri



Michael L. Vanbuskirk 816.512.1010 mvanbuskirk@ngzimmer.com

Justin Beal 816.268.4241 jbeal@ngzimmer.com

Newmark Grubb
Zimmer

301-309 SE Douglas Street

Lee's Summit, Missouri



Michael L. Vanbuskirk 816.512.1010 mvanbuskirk@ngzimmer.com

Justin Beal 816.268.4241 jbeal@ngzimmer.com

Newmark Grubb
Zimmer